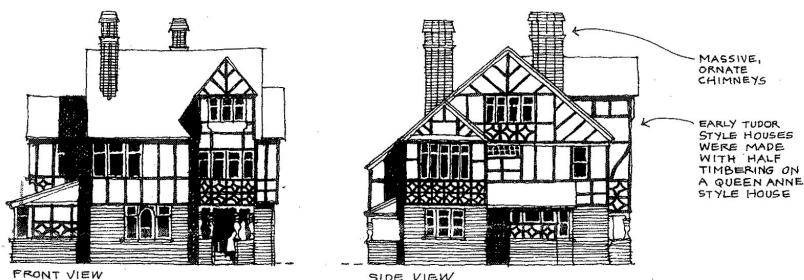


TUDOR REVIVAL

1920s

One of the many period revival styles that began in the 1920s and became popular in the late 1920s – early 1930s, the Tudor style replicated the cottages and homes of the English countryside.

There are many examples of Tudor homes in Ontario, primarily in the Rosewood Court Historic District



COMMON FEATURES

- Slate or Wood Shake roof
- Steep pitched gable or hipped roofs
- Brick for exterior walls, sometimes mixed with stucco (on upper stories)
- Half timbered details on upper stories or gable ends
- Multi-paned windows
- Large central chimneys
- Cantilevered second floor popouts

WINDOWS

Windows were typically individual casement, double or single-hung multi-paned windows either wood or metal frames. Stained glass windows were also used to accent an interior or exterior feature.

Doors were typically simple, and could include stained or beveled glass panels. Doors would also be stained.

COLORS

Homes were typically painted in color schemes consisting of 3 colors. Base colors were typically light earth tones. Trim Colors were typically in contrast the base color. Window frames would tend to be dark colors.

