

# PREFAB / MODULAR

## 1940s - Present

Prefabricated and modular housing varies from detailed houses to mobile homes. This type of housing became popular after World War II when there was a great demand for housing. It was dependent upon pre-fabricated industrial construction schemes used so effectively during the war. Quonset Hut, mobile home: pre-manufactured unit transported to desired site. Typically they were linear in plan composed of a line of rooms opening off a long hallway. It developed during the post-war era out of the house trailer so popular during the 1950s and 1960s, but differs from in that once positioned, it usually remained permanently stationed, having foregone its original mobility as it grew in size and complexity of its made-to-order interior furnishing and appliances.

Many prefab/modular homes have built in Ontario. There have been several mobile home parks in Ontario. The best examples of a manufactured home in Ontario are the Kaiser Community Homes built in the late 1940s.

### COMMON FEATURES

- Rectangular shape
- Linear in plan
- Long hallways

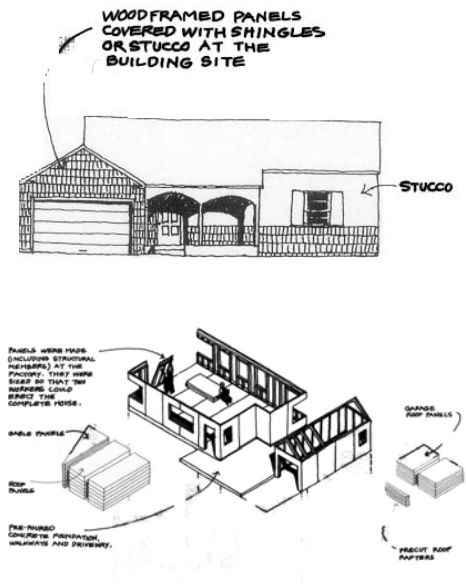
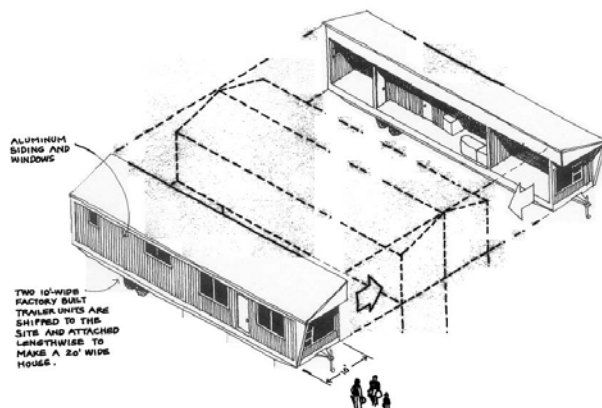
### WINDOWS

Windows were typically simple with metal frames.

### DOORS

Doors were typically simple wood doors. Main entrances may have had glass panels.

### COLORS



Homes were typically painted a variety of color schemes.

