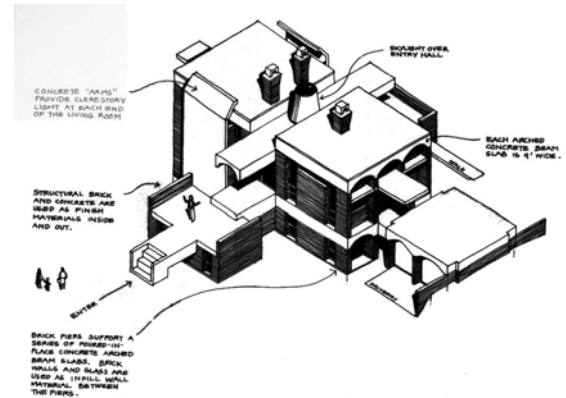


BRUTALISM

1960 - Present

This style was originally used to describe the work of British architects that allowed all of the buildings elements and systems to be exposed. The concrete buildings of Le Corbusier and others eventually were classified under this style. Brutalism is in direct opposition to the Corporate International Style. Buildings are heavy and monumental in contrast to the lightweight feel of the Corporate International style.

There are not any known buildings constructed in this style, but it is very compatible with large buildings constructed in the eastern part of Ontario.



COMMON FEATURES

- Variety of forms, including vertical and horizontal projections, roof forms, shapes
- Combining walls and structure into one form.
- Structure predominates
- Infill walls created to join walls and structure where separate (typically brick or other materials)
- Openings introduced and holes in structure/wall
- Exposed concrete surfaces
- Exposed ductwork, pipes, vents, etc.

WINDOWS

Windows were typically fixed single-paned with metal frames

DOORS

Doors were typically simple metal doors, sometimes with glass panels.

COLORS

Buildings were typically not painted. Only windows and doorframes would have any accent color.

