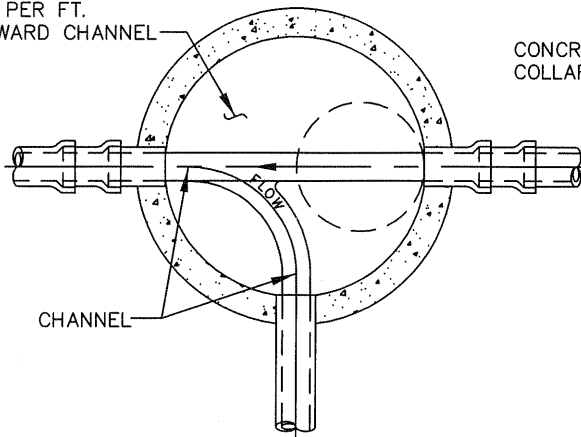


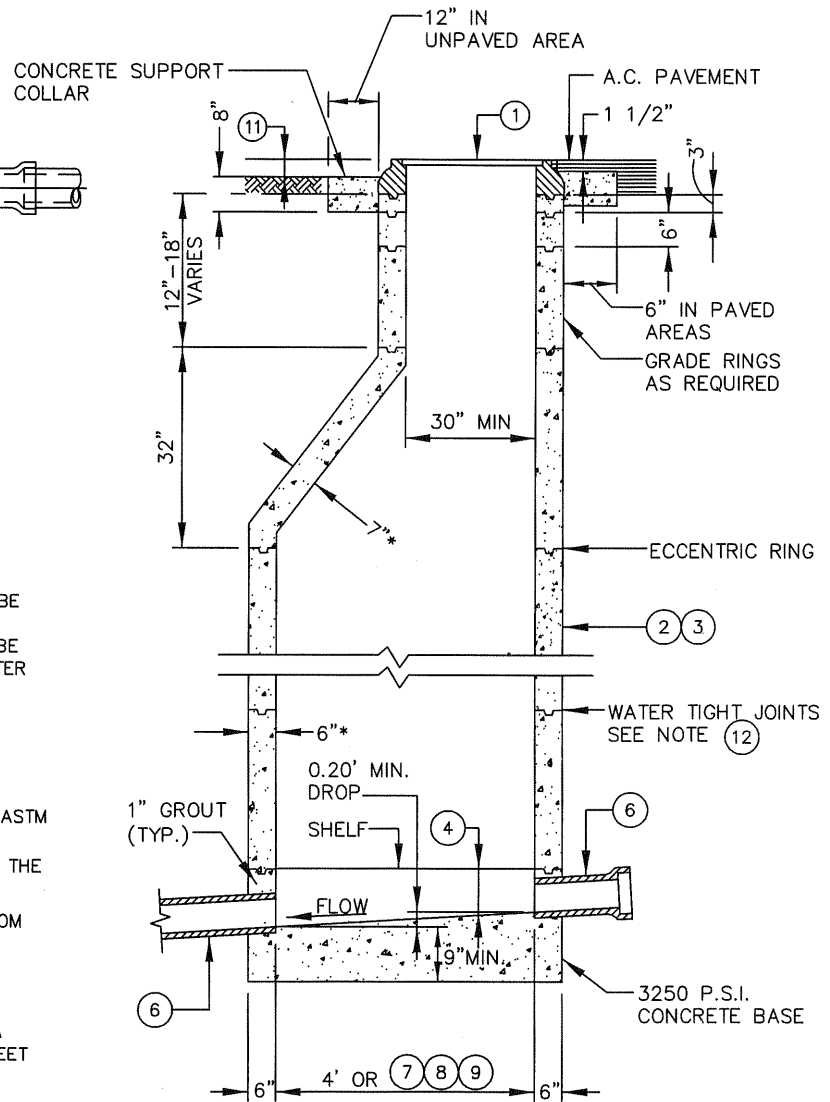
SLOPE SHELVES 1  
IN. PER FT.  
TOWARD CHANNEL



**PLAN OF BASE**

## NOTES

- ① FRAME AND COVER FOR 48" I.D. MANHOLE SHALL BE 30". FRAME AND COVER FOR 60" OR LARGER I.D. MANHOLE SHALL BE 36". MANHOLE COVER SHALL BE MANUFACTURED WITH THE LETTER "S" IN THE CENTER OF THE COVER.
- ② NON-REINFORCED PRE-CAST MANHOLES SHALL BE CLASS 560-C-3250 PER SECTION 201-1 OF THE STANDARD SPECIFICATIONS FOR PUBLIC WORKS CONSTRUCTION.
- ③ REINFORCED PRE-CAST MANHOLES SHALL BE PER ASTM C-478 SPECIFICATIONS.
- ④ THE DEPTH OF THE CHANNEL SHALL BE EQUAL TO THE FULL DIAMETER OF THE PIPE.
- ⑤ THE BRANCH SHALL DROP A MINIMUM OF 0.20' FROM ITS INLET TO THE OUTLET ELEVATION.
- ⑥ A 24" LONG STUB SHALL BE INSTALLED FROM THE MANHOLE INSIDE WALL TO THE PIPE BELL.
- ⑦ 48" I.D. MANHOLE TO BE USED ON SEWERS WITH A DIAMETER OF 18" OR LESS AND A DEPTH OF 12 FEET OR LESS UNLESS OTHERWISE DIRECTED BY THE ENGINEER.
- ⑧ 60" I.D. MANHOLE TO BE USED ON SEWERS WITH A DIAMETER OF 20" OR MORE OR WITH A DEPTH GREATER THAN 12 FEET UNLESS OTHERWISE DIRECTED BY THE CITY ENGINEER.
- ⑨ 72" I.D. MANHOLE TO BE USED ON SEWERS WITH A DIAMETER OF 30"
- ⑩ THE CROWN ELEVATIONS OF ALL PIPES SHALL BE THE SAME AS THE CROWN ELEVATION OF THE LARGEST PIPE UNLESS OTHERWISE NOTED ON THE DRAWING.
- ⑪ FOR MANHOLES LOCATED OUTSIDE PAVED AREAS THE FRAME AND COVER SHOULD BE SET A MINIMUM OF 0.1 FEET ABOVE FINISH GRADE IN SHOULDER AREAS, UNPAVED ROADS OR LANDSCAPED AREAS AND 18" ABOVE UNFINISHED AREAS.
- ⑫ **MORTAR JOINTS** - SUFFICIENT MORTAR SHALL BE APPLIED ACROSS ENTIRE FACE OF JOINT SO THAT WHEN PRECAST UNITS ARE PLACED ON TOP OF ONE ANOTHER, THE MORTAR WILL SQUEEZE OUT BOTH THE INSIDE AND OUTSIDE WALL FACES AROUND FULL CIRCUMFERENCE. JOINTS SHALL BE "POINTED UP" AFTER SETTING PRECAST UNITS EXCLUDING GRADE RINGS. **PLASTIC JOINTS** - PREFORMED COLD-APPLIED READY-TO-USE PLASTIC JOINT SEALING COMPOUND SHALL BE A QUICK-SEAL. MUST BE USED WHEN GROUND WATER IS ENCOUNTERED.



**Section View**

\*(NON-REINFORCED MANHOLE)



APPROVED BY:				
<i>John P. Sullivan</i>				
JOHN P. SULLIVAN CITY ENGINEER 24079 08/15/06 RCE DATE				
RECOMMENDED:				
<i>Scott Burton</i>				
ASST. UTIL. DIRECTOR/ENG. 57875 08/14/06 RCE DATE				
REV	DESCRIPTION	BY	APP'D	DATE

**CITY OF ONTARIO**

**SEWER MANHOLE**

STANDARD  
DRAWING  
NUMBER

**2001**