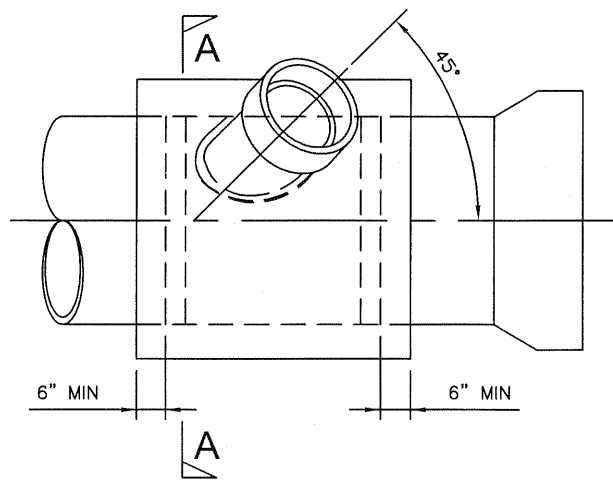
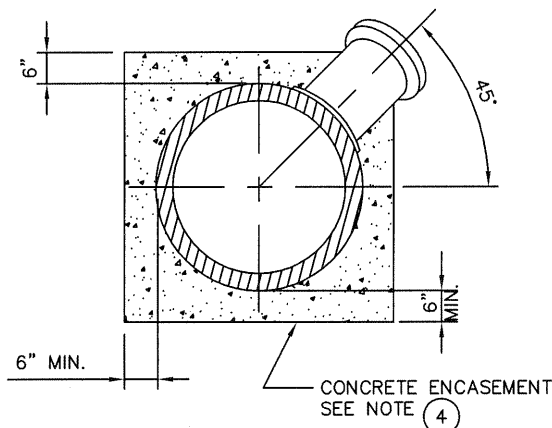


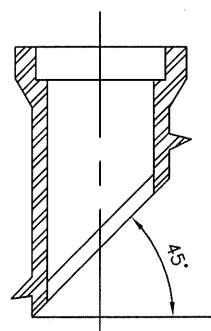
COLLAR WYE SADDLE



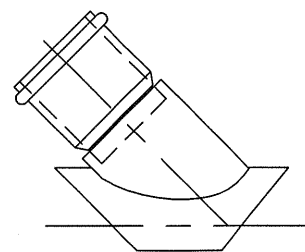
CUT IN WYE



SECTION A-A



CLAY



PVC

NOTES

- ① TAP TO BE MADE AT APPROXIMATELY CENTER OF JOINT LENGTH.
- ② THE HOLE FOR THE COLLAR WYE FITTING FOR A SEWER SADDLE SHALL BE MADE WITH A TAPPING MACHINE. THE HOLE SHALL BE CLEANLY MACHINED AND IF NECESSARY WORKED BY HAND WITH A RASP, OR SANDED TO ACCOMPLISH A TRUE AND NEAT OPENING FOR THE COLLAR WYE.
- ③ THE COLLAR WYE SADDLE SHALL BE SECURED TO THE SEWER WITH AN APPROVED EPOXY RESIN.
- ④ THE SADDLE CONNECTION SHALL BE ENCASED WITH CLASS 560-C-3250 CONCRETE AFTER THE CONNECTION IS APPROVED BY THE INSPECTOR TO THE LIMITS INDICATED ABOVE. CONCRETE SHALL BE CLASS 560-C-3250 PER SECTION 201-1.1.2 STD. SPECIFICATION FOR PUBLIC WORKS CONSTRUCTION.
- ⑤ THE BELL ON THE LATERAL SHALL NOT BE ENCASED.
- ⑥ ALL CHIPS, DIRT, EPOXY, MORTAR, AND CONCRETE SHALL BE KEPT OUT OF THE SADDLED SEWER, AND CLEANING AND BALLING OF THE SADDLED REACH SHALL BE PERFORMED IF SO ORDERED BY THE INSPECTOR.
- ⑦ ANY DAMAGED PIPE SHALL BE REPAIRED OR REPLACED AS DIRECTED BY THE INSPECTOR.
- ⑧ COLLAR WYE SADDLE OR CUT IN WYE TO BE USED WHEN LATERAL IS 4" OR 6" IN DIAMETER. FOR 8" AND OVER, A STANDARD MANHOLE CONNECTION IS REQUIRED.
- ⑨ SEE DRAWING NO. 4001 FOR REQUIREMENTS WHEN SEWER CONNECTION IS CONSTRUCTED IN THE VICINITY OF A WATER MAIN.
- ⑩ MAIN LINE SHALL BE BROKEN OUT FOR SADDLE ONLY IN THE PRESENCE OF A CITY ENGINEERING DEPARTMENT INSPECTOR.



APPROVED BY:				
<i>John P. Sullivan</i>				
JOHN P. SULLIVAN CITY ENGINEER				
24079 08/15/06				
RCE DATE				
RECOMMENDED:				
<i>Scott Burton</i>				
57875 08/14/06				
ASST. UTIL. DIRECTOR/ENG.				
RCE DATE				
REV	DESCRIPTION	BY	APP'D	DATE

CITY OF ONTARIO

SEWER SADDLE
AND CUT IN
WYE CONNECTION

STANDARD
DRAWING
NUMBER

2005