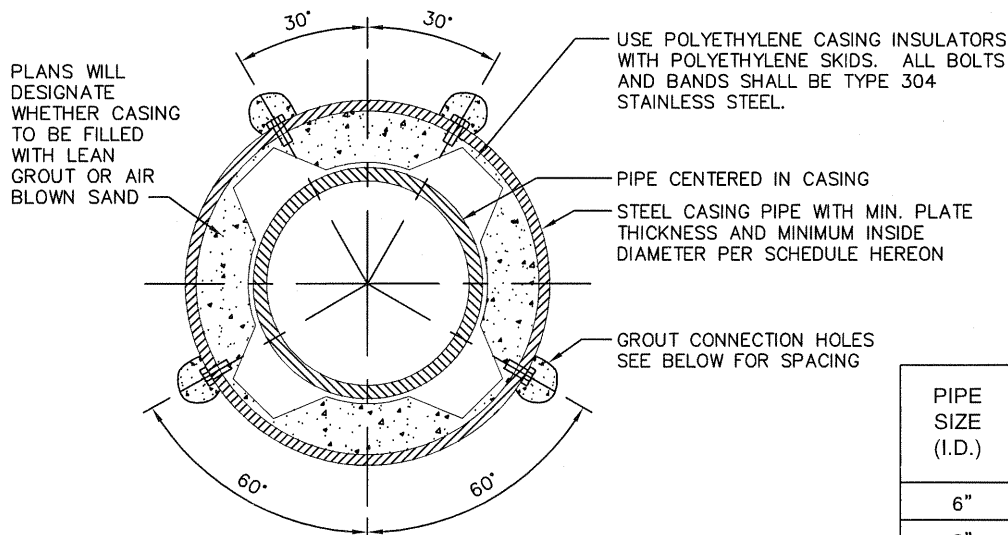
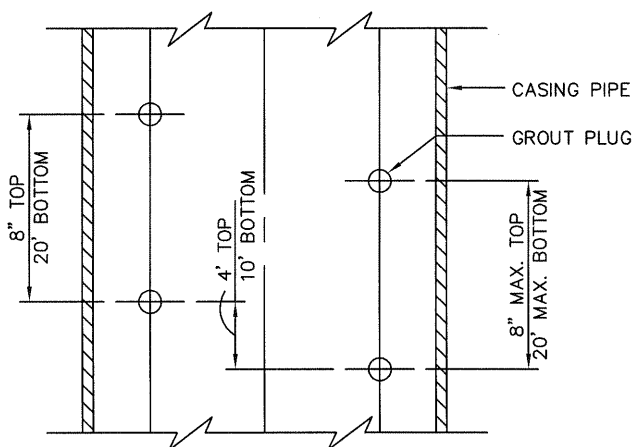


CASING DETAIL



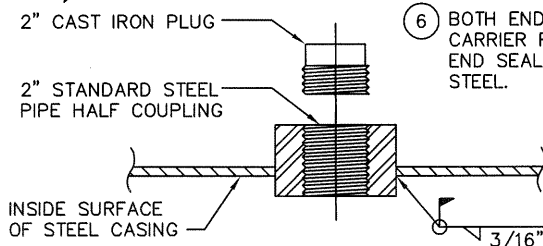
SECTION A - A

PIPE SIZE (I.D.)	STEEL CASING PIPE		
	MIN. SIZE (I.D.)		MIN. WALL THK.
	DIP & PVC	CML&C	
6"	16"	14"	1/4"
8"	18"	14"	1/4"
10"	21"	18"	5/16"
12"	24"	18"	5/16"



NOTES

- 1 ALL STEEL CASING PIPE JOINTS SHALL BE WELDED FULL CIRCUMFERENCE.
- 2 PERIPHERY OF CASING TO BE PRESSURE GROUTED.
- 3 CARRIER PIPE SHALL BE AIR TESTED PRIOR TO FILLING CASING WITH GROUT OR BLOWN SAND.
- 4 UPSTREAM AND DOWNSTREAM ELEVATIONS TO BE VERIFIED PRIOR TO FILLING CASING.
- 5 SPACING BETWEEN THE CASING INSULATORS SHALL BE PER THE MANUFACTURERS RECOMMENDATIONS EXCEPT THAT THERE SHALL BE AT LEAST 3 CASING INSULATORS PER PIPE SECTION, ONE 12" FROM EACH JOINT AND ONE CENTERED. ADDITIONALLY, ONE INSULATOR SHALL BE INSTALLED 12" FROM EACH END OF THE CASING.
- 6 BOTH ENDS OF THE CASING BETWEEN THE CASING AND CARRIER PIPE SHALL BE SEALED WATERTIGHT USING AN END SEAL. BANDS SHALL BE TYPE 304 STAINLESS STEEL.



GROUT COUPLING



APPROVED BY: <i>John P. Sullivan</i> 24079 08/15/06				
JOHN P. SULLIVAN CITY ENGINEER RCE DATE				
RECOMMENDED: <i>Scott Burke</i> 57875 08/14/06				
ASST. UTIL. DIRECTOR/ENG. RCE DATE				
REV	DESCRIPTION	BY	APP'D	DATE

CITY OF ONTARIO

SEWER AND WATER
CASING DETAIL

STANDARD
DRAWING
NUMBER

2103