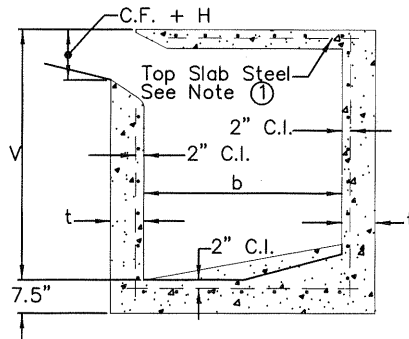


W of C.B.	V (ft.)		t (in.)	Front Wall Steel		Rear & End Walls & Floor Steel Each Way
	From	To (incl.)		Horiz.	Vert.	
to 7'		4	6	#3@6"	#3@6"	#3@6"
to 7'	4	8	8	#4@12"	#4@12"	#4@12"
to 7'	8	12	10	#4@10"	#4@10"	#4@10"
14'		4	6	#3@6"	#3@6"	#3@6"
14'	4	8	8	#4@12"	#4@12"	#4@12"
14'	8	10	10	#4@8"	#4@12"	#4@10"
14'	10	12	10	#4@6"	#4@12"	#4@10"

WALL AND FLOOR STEEL SEE NOTE ②

## CATCH BASIN REINFORCEMENT "W" TO 14' (incl.)



SECTION 1

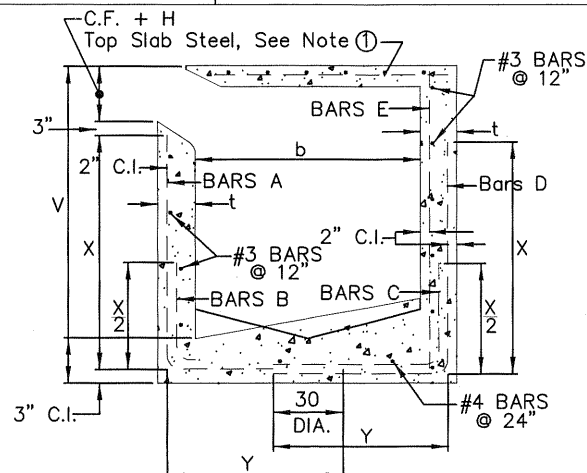
## NOTE

NO. 4 BARS MAY BE USED IN LIEU OF NO. 3 BARS AS FOLLOWS.

Tabled Value	Alternative Value
#3@2"	#4@2"
#3@6"	#4@10"
#3@6.5"	#4@12"
#3@7.5"	#4@14"
#3@8.5"	#4@16"
#3@10.5"	#4@18"
#3@11"	#4@18"
#3@12"	#4@18"
#3@14"	#4@24"
#3@18"	#4@24"
#3@20"	#4@24"
#3@24"	#4@24"

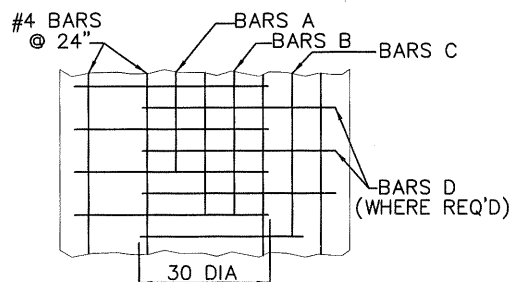
V (ft.)		t (in.)	Front Wall Steel	Rear Wall Steel			End Wall Steel
From	To (incl.)		Bars A&B	Bars C	Bars D	Bars E	Horiz. & Vert.
	4	6	#3@24"	#3@12"		#4@24"	#3@18"
4	5	8	#3@20"	#3@12"		#4@24"	#3@14"
5	6	8	#3@12"	#3@10 1/2"		#4@24"	#3@14"
6	7	8	#4@17"	#3@8"		#4@24"	#3@14"
7	8	8	#4@13"	#3@6"		#4@24"	#3@14"
8	9	10	#4@15"	#3@7"		#4@20"	#3@11"
9	10	10	#4@12"	#4@12"		#4@20"	#3@11"
10	11	10	#5@15"		#4@11"	#4@18"	#3@11"
11	11	10	#6@18"		#4@9"	#4@13"	#3@11"
X=(V+t)-(C.F.+H+4 1/2")			Y=( $\frac{b+2t}{2}$ )+ 15 dia. - 2"				

WALL AND FLOOR STEEL

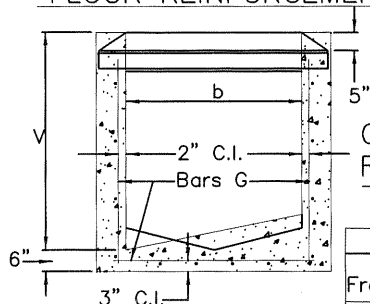


SECTION 2

## CATCH BASIN REINFORCEMENT "W" GREATER THAN 14'



FLOOR REINFORCEMENT SECTION 2



GRATING BASIN REINFORCEMENT

V (ft.)		t (in.)	Side & End Wall Steel
From	To (incl.)		Bars G
	4	6	#3@6"
4	8	8	#4@6"
8	12	10	#5@6"

## NOTES

- TOP SLAB REINFORCEMENT - FOR DETAILING OF REQUIRED STEEL, SEE CATCH BASIN STD. DWGS. FOR DIMENSIONS "b" GREATER THAN 4'-6", SEE THE SPECIAL DESIGN OF THE TOP SLAB REINFORCEMENT SHOWN ON THE REQUIRED STRUCTURAL PLAN.
- WALL AND FLOOR REINFORCEMENT - THE INDICATED REINFORCING STEEL APPLIES TO CATCH BASIN STD. DWG. 3001 AND 3003. CATCH BASINS CONSTRUCTED ON STREETS NOT DESIGNATED AS STATE HIGHWAYS ONLY REQUIRE WALL AND FLOOR REINFORCEMENT UNDER THE FOLLOWING CONDITIONS.

Basin Opening (W, C or S)
TO 7 FEET (INCL.)
7 TO 14 FEET (INCL.)
14 TO 21 FEET (INCL.)
OVER 21 FEET

Basin Depth (V)
10 FEET OR MORE
7 FEET OR MORE
6 FEET OR MORE
ALL

- GENERAL - STEEL TO CONCRETE SURFACE, END CLEARANCE, SHALL BE 1 1/2". CONNECTOR PIPE IS ALIGNED TO END WALL OF CATCH BASIN. FOR THE DESIGN OF CATCH BASINS WITH A V-DEPTH EXCEEDING 12 FEET, SEE THE REQUIRED STRUCTURAL PLAN.
- MANHOLE FRAME AND COVER ALHAMBRA FOUNDARY A-15530B OR EQUAL.



APPROVED BY:		24079 8/08/06	
JOHN P. SULLIVAN CITY ENGINEER		RCE DATE	
RECOMMENDED:		33340 8/07/06	
JIM MIMMACH ASSISTANT CITY ENGINEER		RCE DATE	
REV	DESCRIPTION	BY	APP'D DATE

CITY OF ONTARIO

CATCH BASIN  
REINFORCEMENT

STANDARD  
DRAWING  
NUMBER

3004