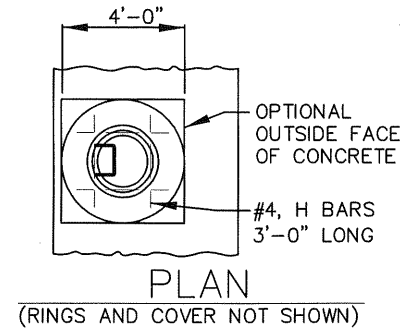
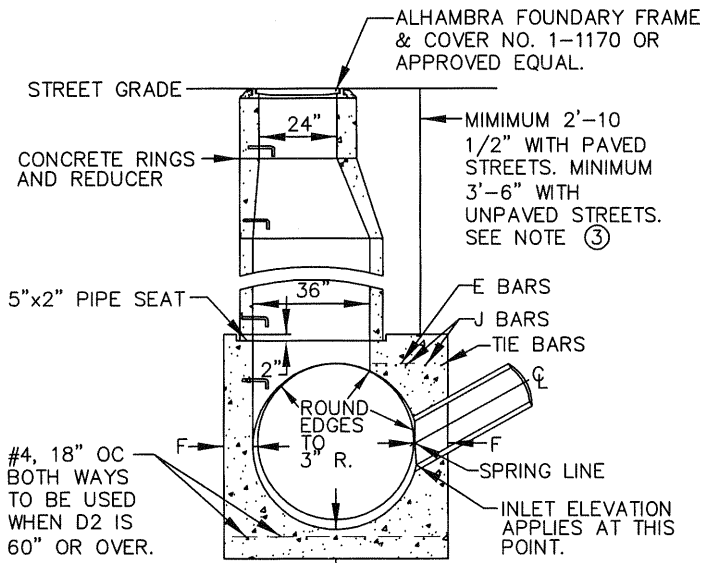


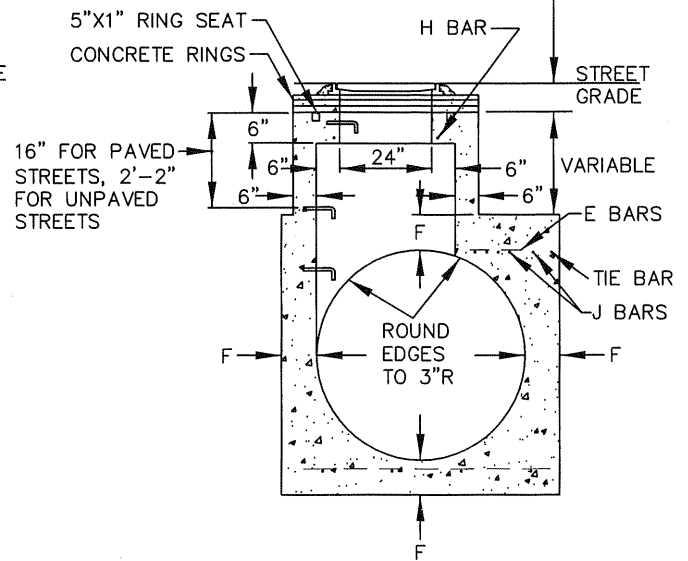
PLAN
(SHAFT NOT SHOWN)



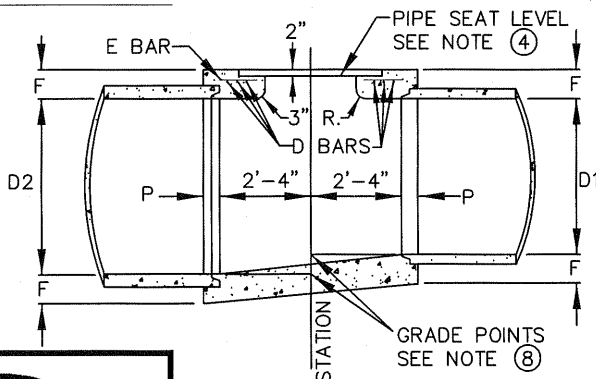
	MAX	MIN
PAVED STREETS	11"	8 1/2"
UNPAVED STRS.	16"	15"



SECTION A-A



DETAIL M
SEE NOTE ⑤



SECTION B-B

NOTE
THE REFERENCED NOTES AND THE
TABLE OF VALUES FOR "F" ARE
LOCATED ON STANDARD DRAWING
3009.



APPROVED BY: <i>John P. Sullivan</i> 24079 8/08/06				
JOHN P. SULLIVAN CITY ENGINEER RCE DATE				
RECOMMENDED: <i>Jim Minich</i> 33340 8/07/06				
JIM MINICH ASSISTANT CITY ENGINEER RCE DATE				
REV	DESCRIPTION	BY	APP'D	DATE

CITY OF ONTARIO

MANHOLE NO 2
PLAN, SECTION AND DETAIL

STANDARD
DRAWING
NUMBER

3008