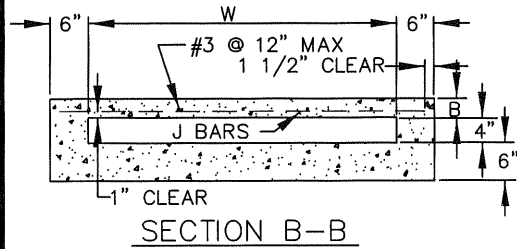
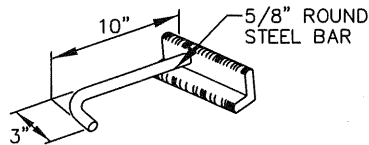


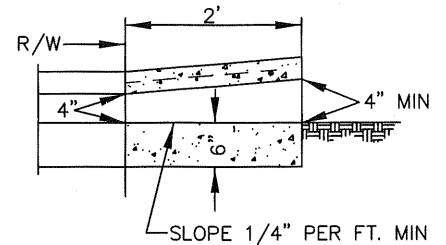
Section - INLET TYPE 1



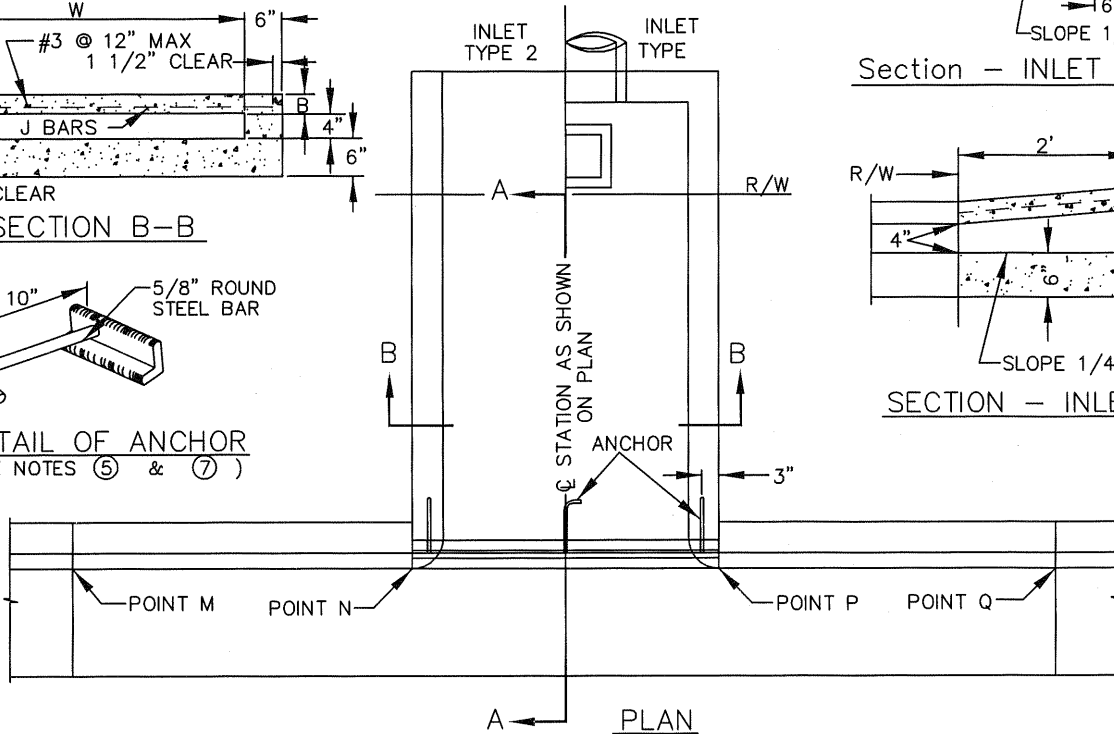
SECTION B-B



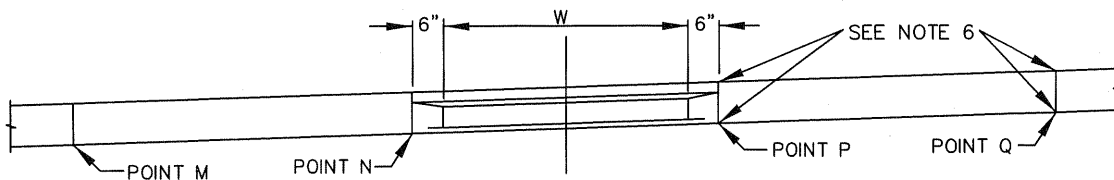
DETAIL OF ANCHOR
(SEE NOTES (5) & (7))



SECTION - INLET TYPE 2



PLAN



PROFILE

STEEL LIST

| W | B | Gavanized Steel Angle | J Bar | | | |
|-------|----|-----------------------|--------|------|---------|--------|
| | | | Anchor | Size | Spacing | Length |
| 1'-0" | 3" | 2 1/2"x2"x3/8" | 2 | #3 | 7" | 1'-9" |
| 1'-6" | " | " | " | " | " | 2'-3" |
| 2'-0" | " | " | " | " | " | 2'-9" |
| 2'-6" | " | " | " | " | " | 3'-3" |
| 3'-0" | " | " | 3 | " | " | 3'-9" |
| 3'-6" | " | " | " | " | 6" | 4'-3" |
| 4'-0" | " | " | " | " | 5" | 4'-9" |

NOTES

- FLOOR OF BOX TO BE TROWELED SMOOTH.
- WHEN THE TOE OF SLOPE IS WITHIN THE R/W, INLET TYPE 1 BEGINS AT THE TOE RATHER THAN AT THE R/W LINE.
- FOR OPEN DITCH APPROACH (TYPE 2) THE 2' EXTENSION IS NOT REQUIRED WHEN THE BACK OF WALK IS 2' OR MORE FROM THE R/W LINE.
- TOP OF INLET STRUCTURE (TYPE 1 & 2) TO BE FLUSH WITH ADJACENT SURFACE WHERE PRACTICABLE.
- A HEADED STEEL STUD 5/8"x 6 3/8" WITH HEAD D=1" ATTACHED BY A FULL PENETRATION BUTT WELD MAY BE USED AS AN ALTERNATE ANCHOR.
- NORMAL CURB FACE AT POINT M & Q, & PLUS 5" AT POINT N AND P.
- THE 3" LEG OF THE INTERIOR ANCHORS SHALL BE PARALLEL TO THE TOP OF SIDEWALK.
- FOR 'W' IN EXCESS OF 4'-0" A DOUBLE BOX STRUCTURE SHALL BE USED.



| | | | |
|--------------------------------|-------------|---------------|------------|
| APPROVED BY: | | 24079 8/08/06 | |
| JOHN P. SULLIVAN CITY ENGINEER | | RCE DATE | |
| RECOMMENDED: | | 33340 8/07/06 | |
| JIM MIMMACH | | RCE DATE | |
| ASSISTANT CITY ENGINEER | | | |
| REV | DESCRIPTION | BY | APP'D DATE |
| | | | |

CITY OF ONTARIO

PARKWAY DRAIN NO 1

STANDARD
DRAWING
NUMBER

3013