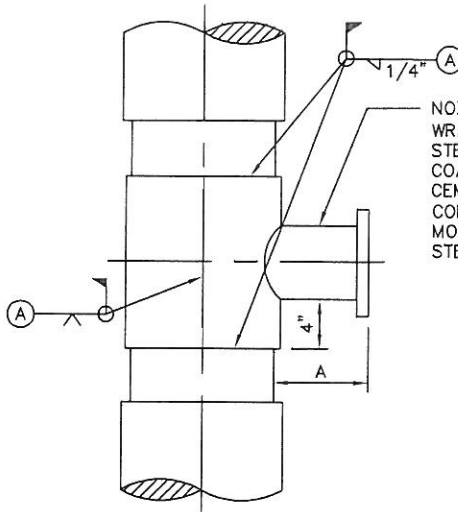
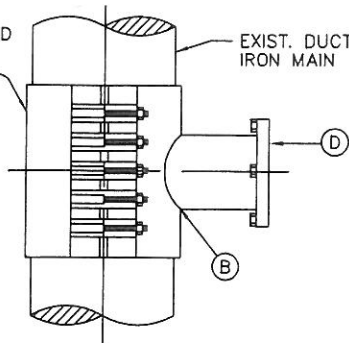


APPROVED
TAPPING
SLEEVE

EXIST. DUCTILE
IRON MAIN



NOZZLE AND FULL
WRAPPER TO BE 1/4" (MIN.)
STEEL-CEMENT MORTAR
COATED. NOZZLE TO BE
CEMENT MORTAR LINED.
CONTRACTOR TO APPLY
MORTAR ON EXPOSED
STEEL CYLINDER.

NOZZLE DIMENSIONS

* TAP SIZE	DIMENSION 'A'
4 IN	5 IN
6 IN	6 IN
8 IN	6 3/4 IN
10 IN	7 IN
12 IN	7 1/2 IN

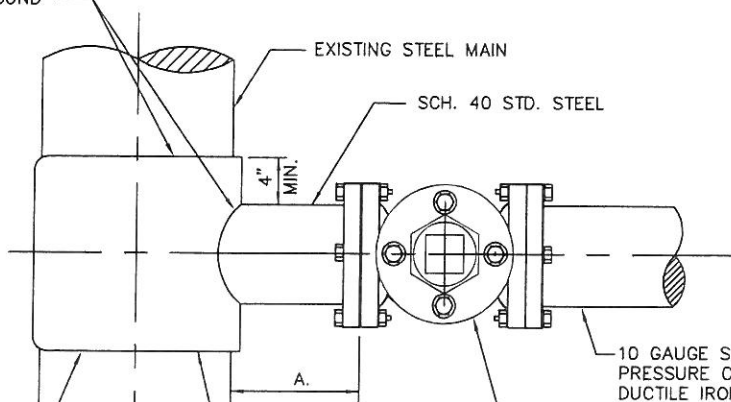
CONSTRUCTION NOTES

- (A) WELD NOZZLE TO PIPE
- (B) AIR TEST NOZZLE
- (C) TAP PIPE
- (D) INSTALL TAPPING SLEEVE

FILLET WELD
ALL AROUND

EXISTING STEEL MAIN

SCH. 40 STD. STEEL

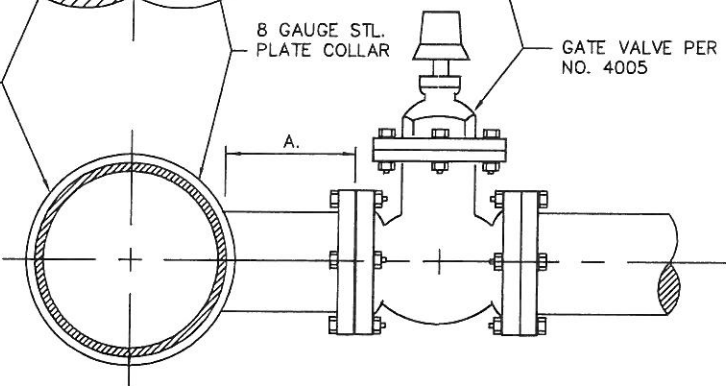


10 GAUGE STEEL, CML&C OR
PRESSURE CLASS 350
DUCTILE IRON PIPE

SEE NOTE
BELOW

8 GAUGE STL.
PLATE COLLAR

GATE VALVE PER STD. DWG.
NO. 4005



NOTES

- (1) FILLET WELDS SHALL BE PER AWWA C-206, "FIELD WELDING OF STEEL WATER PIPE."
- (2) SIZE ON SIZE CONNECTIONS REQUIRE THE INSTALLATION OF A TEE, AND VALVE ASSEMBLY OF THE SAME MATERIAL AS THE MAIN OR AS APPROVED BY THE CITY.



APPROVED BY:		11-22-10	
LOUIS ABI-YOUNES, CITY ENGINEER		44485	
RECOMMENDED:		10/25/10	
SCOTT BURTON, UTILITIES ENG/OPERATIONS DIRECTOR		57875	
REV	DESCRIPTION	BY	APP'D DATE

CITY OF ONTARIO

"HOT-TAP" DETAIL

STANDARD
DRAWING
NUMBER

4106