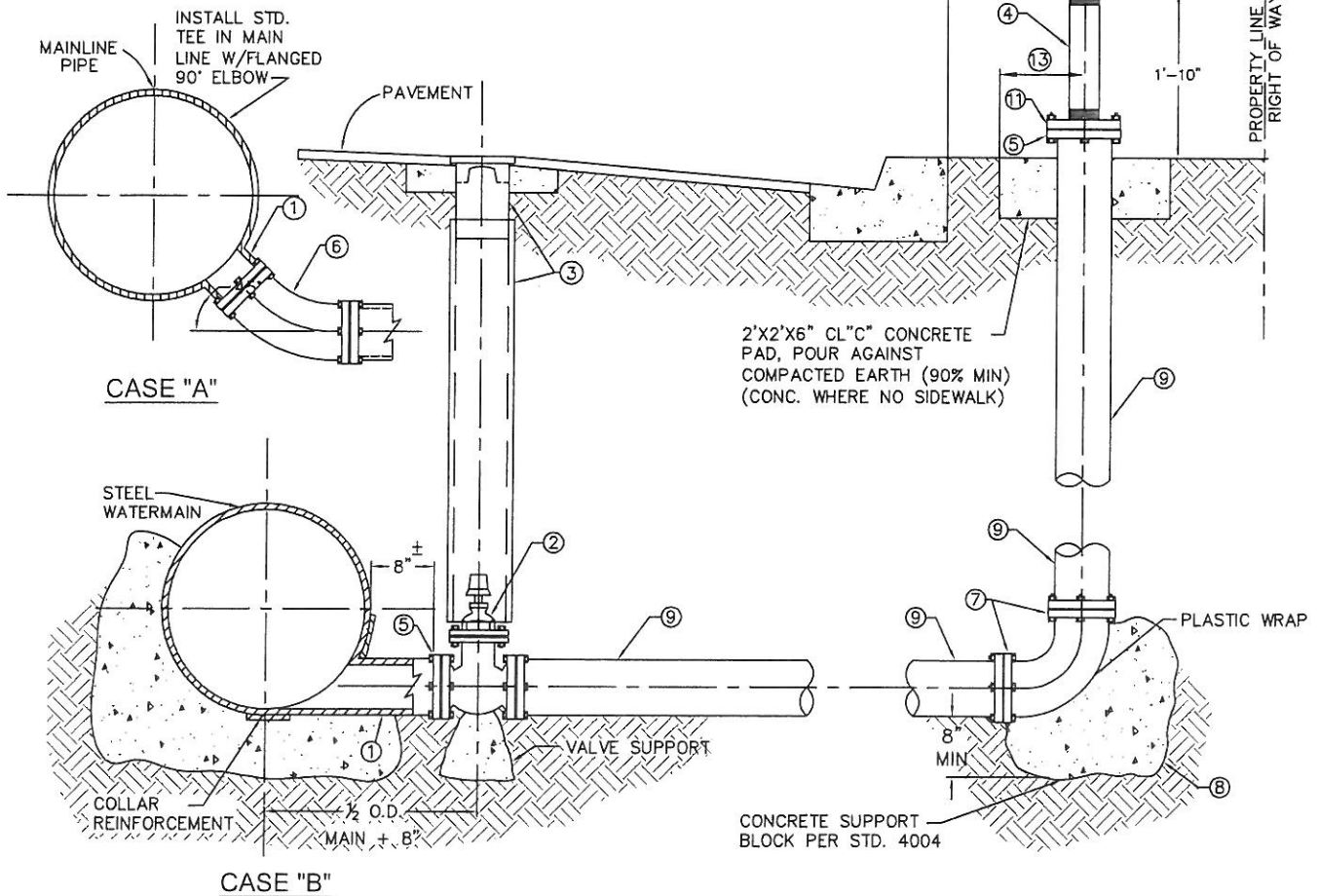


1. ALL BLOW-OFFS SHALL HAVE GUARD POST IN UNPAVED AREAS PER STD. 4303
2. HYDRANTS AND/OR BLOW OFFS TO BE PAINTED WITH PRIMER AND TWO (2) COATS OF YELLOW ACME PAINT, NO. 2-19057 OR APPROVED EQUAL.  
(NO PAINT ON BRASS OR BRONZE).



### NOTES

- ① TANGENTIAL OUTLET 4-1/2" O.D. X 10GA. CML&C
- ② 4" DIA. A.W.W.A. C-509 (LATEST) FLG'D. RESILIENT SEAT GATE VALVE, PER STD. DWG. 4005
- ③ STANDARD VALVE BOX INSTALLATION PER STD. 4005
- ④ 4" DIA. STD. GAV. NIPPLE, OUTSIDE PAINTED.
- ⑤ 4" DIA. 150 LB. SLIP-ON FLANGE
- ⑥ 4" DIA. FLGD. 4 PC. A.W.W.A. 10 GA. 45° BEND, LINED & COATED SAME AS MAIN.
- ⑦ 4" DIA. FLGD. 5 PC. A.W.W.A. 10 GA., CML&C OR STD. WT. CML&C 90° BEND
- ⑧ THRUST BLOCK PER STD. DWG. 4004
- ⑨ 4" DIA. CML&C, 10 GA. W.S.P.
- ⑩ 4" X 2-1/2" BRONZE WHARF HYDRANT, JAMES JONES MODEL NO. J-344 H.P. OR APPROVED EQUAL.
- ⑪ A.S.A. 150 LB. SCREWED COMPANION FLANGE.
- ⑫ 18" BEHIND CURB WHEN THE SIDEWALK IS ADJACENT TO THE RIGHT-OF-WAY.
- ⑬ 18" BACK OF SIDEWALK WHEN SIDEWALK IS ADJACENT TO CURB.



APPROVED BY: <i>Louis Abi-Younes</i> 11-22-10				
LOUIS ABI-YOUNES, CITY ENGINEER RCE DATE 11/22/10				
RECOMMENDED: <i>Scott Burton</i> 10/25/10				
SCOTT BURTON, UTILITIES ENG/OPERATIONS DIRECTOR RCE DATE 10/25/10				
REV	DESCRIPTION	BY	APP'D	DATE

CITY OF ONTARIO

4" BLOWOFF

STANDARD  
DRAWING  
NUMBER

4107