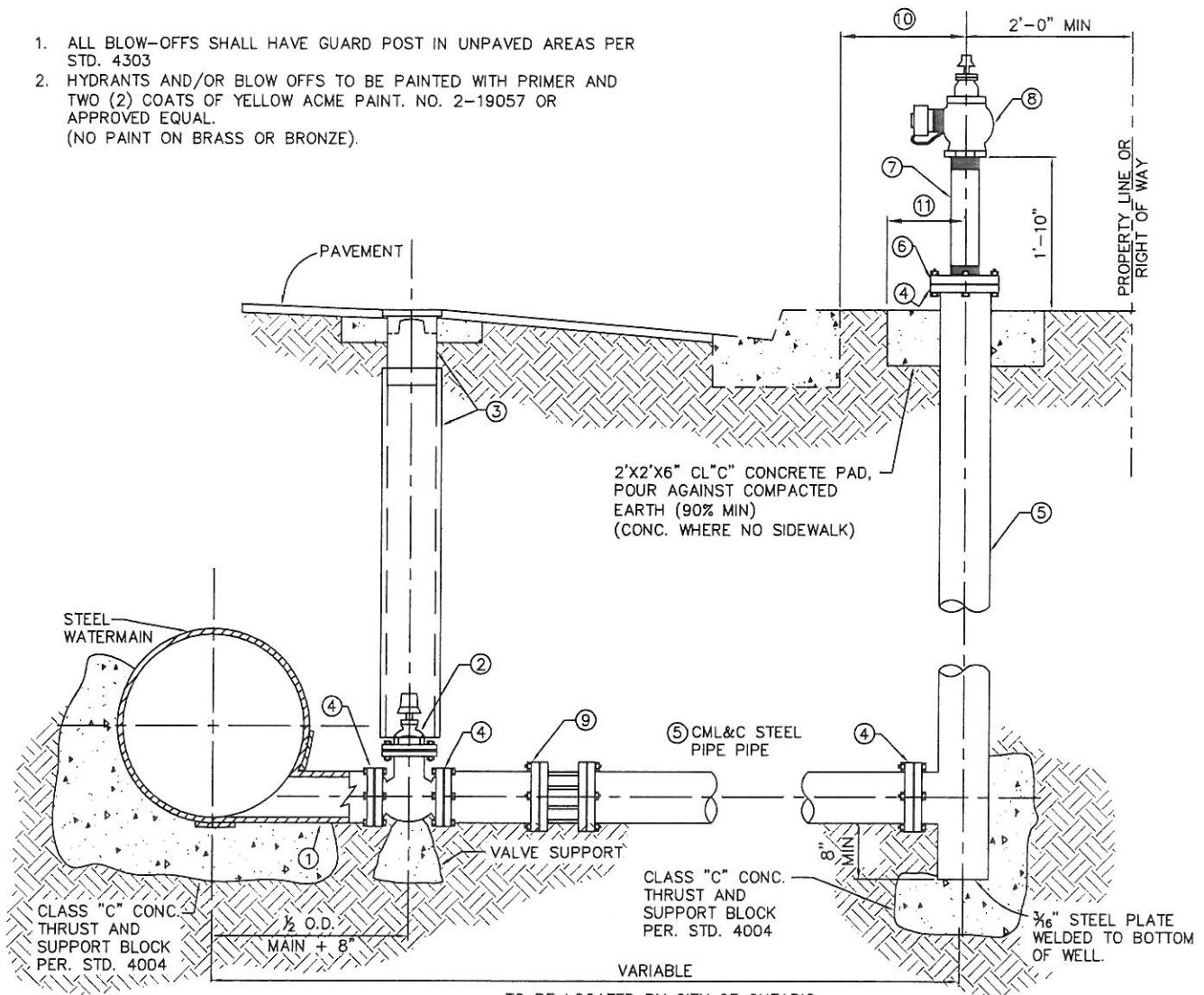


1. ALL BLOW-OFFS SHALL HAVE GUARD POST IN UNPAVED AREAS PER STD. 4303
2. HYDRANTS AND/OR BLOW OFFS TO BE PAINTED WITH PRIMER AND TWO (2) COATS OF YELLOW ACME PAINT. NO. 2-19057 OR APPROVED EQUAL.
(NO PAINT ON BRASS OR BRONZE).



CASE "B"

TO BE LOCATED BY CITY OF ONTARIO

NOTES

- ① TANGENTIAL OUTLET, 10 GA. CML&C AND REINFORCED PER AWWA
- ② 6" OR 8" GATE VALVE PER STD. 4005 (SIZE AS SPECIFIED ON DRAWING)
- ③ VALVE BOX INSTALLATION PER STD. 4005. A.S.A. 150 LB. SLIP ON FLANGES (SHIP LOOSE FOR FIELD WELDING)
- ⑤ WELDED STEEL PIPE, 10 GA. CML&C
- ⑥ A.S.S. 150 LB. REDUCING SCR. COMPANION FLANGE
- ⑦ 4" STD. GAV. PIPE, OUTSIDE PAINTED
- ⑧ 4" X 2-1/2" BRONZE WHARF HYDRANT, J. JONES MODEL NO. J-344 H.P. OR APPROVED EQUAL
- ⑨ INSTALL FLEX COUPLING SPECIFICATIONS WHERE WATERMAIN IS 24" DIA. & LARGER
- ⑩ 18" BEHIND CURB WHEN THE SIDEWALK IS ADJACENT TO THE RIGHT-OF-WAY.
- ⑪ 18" BACK OF SIDEWALK WHEN SIDEWALK IS ADJACENT TO CURB.



APPROVED BY:				
<i>Louis Abi-Younes</i> 11-22-10				
LOUIS ABI-YOUNES, CITY ENGINEER RCE DATE				
RECOMMENDED: 12/25/10				
<i>Scott Burton</i> 57875				
SCOTT BURTON, UTILITIES ENG/OPERATIONS DIRECTOR RCE DATE				
REV	DESCRIPTION	BY	APP'D	DATE

CITY OF ONTARIO

6" & 8"
BLOWOFF

STANDARD
DRAWING
NUMBER

4109