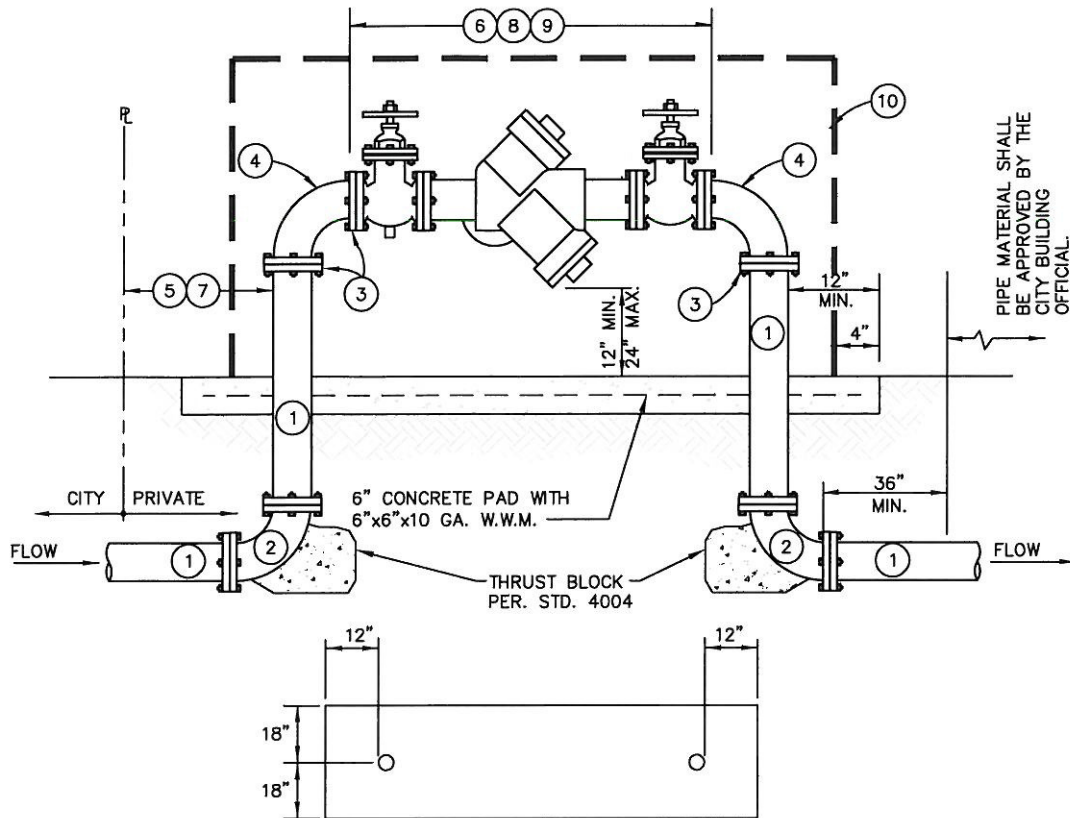


*NOTE: ASSEMBLY PAINTED
PER SPECIFICATIONS



CONCRETE PAD - PLAN VIEW

NOTES:

- (1) STANDARD STEEL PIPE SCHEDULE 40 OR CML&C. PAINTED ABOVE GRADE.
- (2) WELDED ELBOW STEEL SCHEDULE 40 OR CML&C.
- (3) WELD SLIP ON FLANGE, TO MATCH BACKFLOW PREVENTION ASSEMBLY.
- (4) FLANGED ELBOW, STEEL, TO MATCH BACKFLOW PREVENTION ASSEMBLY.
- (5) NO CONNECTION SHALL BE INSTALLED BETWEEN THE METER AND THE BACKFLOW ASSEMBLY.
- (6) ASSEMBLY SHALL BE ON THE LATEST U.S.C. F.C.C.C. & H.R. INSTITUTE LIST AND COMPLY WITH STATE OF CALIFORNIA DEPARTMENT OF PUBLIC HEALTH GUIDELINES.
- (7) BACKFLOW ASSEMBLY SHALL BE INSTALLED AS CLOSE TO THE PROPERTY LINE AS IS POSSIBLE. LOCATION SHALL BE APPROVED BY THE CITY ENGINEER.
- (8) BACKFLOW ASSEMBLY SHALL BE INSTALLED HORIZONTAL AND LEVEL, UNLESS ALTERNATIVE ORIENTATION APPROVED BY THE STATE OF CALIFORNIA DEPARTMENT OF PUBLIC HEALTH AND U.S.C. F.C.C.C. & H.R.
- (9) BACKFLOW ASSEMBLY SHALL BE LOCATED IN DENSE LANDSCAPE AREAS OR AREAS NOT VISIBLE TO PUBLIC VIEW. LOCATION TO BE APPROVED BY THE CITY ENGINEER.
- (10) OPTIONAL STRONGBOX VANDAL RESISTANT ENCLOSURE, SIZE AS NECESSARY, PAINT PER SPECIFICATIONS.



APPROVED BY:		11-8-11	
LOUIS ABI-YOUNES, CITY ENGINEER		44485	
RECOMMENDED:		10/25/11	
SCOTT BURTON, ASSISTANT UTILITIES GENERAL MANAGER		57875	
REV	DESCRIPTION	BY	APP'D DATE

CITY OF ONTARIO	
BACKFLOW PREVENTION ASSEMBLY 3" & LARGER - REDUCED PRESSURE DEVICE	STANDARD DRAWING NUMBER 4207