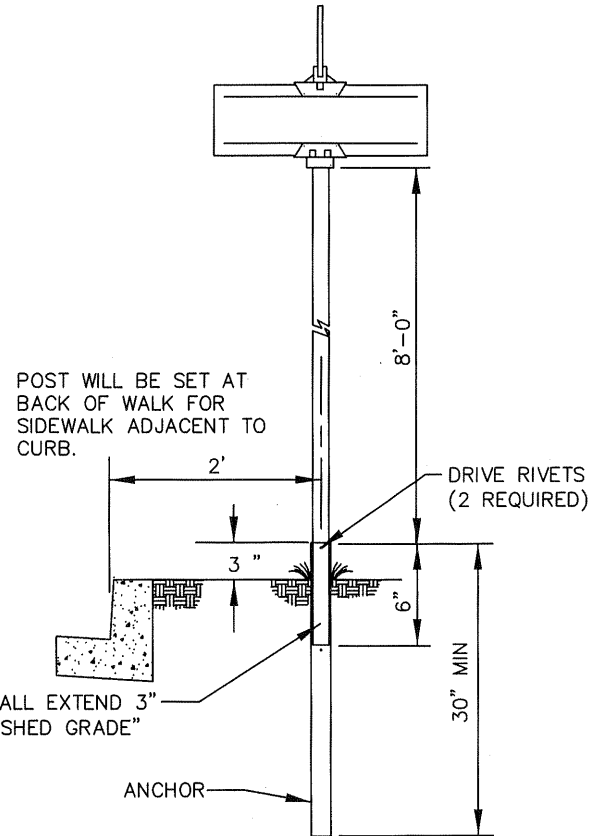
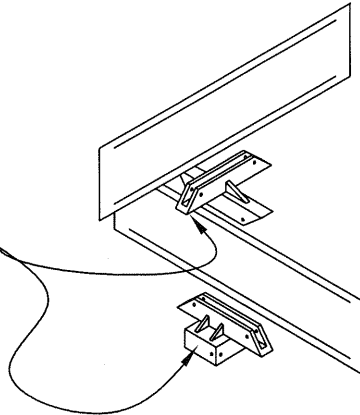


REFERENCE STANDARD DRAWING LOGO DETAIL

ZUMAR, STYLE 850 LONG  
WITH SET SCREWS. 90  
DEGREE ALUMINUM EXTRUDED  
CROSS PIECE, AND POST CAP  
FOR A 2\"/>



### SIGN MATERIALS

- 1) SIGN SHALL BE EXTRUDED ALUMINUM OF THE CROSS SECTION SHOWN, WESTERN HIGHWAY PRODUCTS, INC. AX9 EXTRUDED BLADE, .091 GAUGE WITH 1/2\"/>

### SIGN PLACEMENTS

THE SIGN SHALL BE PLACED AT E.C.R. OF THE MOST SIGNIFICANT STREET, AND BE FULLY VISIBLE FROM ALL APPROACHES.

- 1) AT TEE INTERSECTIONS, INSTALL SIGN IN NORTH EAST OR SOUTH WEST CORNER.
- 2) AT 4-WAY INTERSECTIONS, INSTALL SIGNS ON BOTH NORTH EAST AND SOUTH WEST CORNERS.
- 3) AT KNUCKLES THE SIGNS SHALL BE PLACED ON EITHER END OF THE INSIDE CURB RETURN.

### POST MATERIALS

- 1) POST SHALL BE 20F-12-2X12 SQUARE TUBE, GALVANIZED FINISH AND \"QUICK-PUNCH\" HOLES, OR APPROVED EQUAL.
- 2) ANCHOR SHALL BE 25K125-2.5 \"HEAVY DUTY\" PREDRILLED ANCHOR OR APPROVED EQUAL.
- 3) DRIVE RIVETS SHALL BE 3/8\"/>

### PRIVATE STREETS

- 2) 1) BACKGROUND SHALL BE 3M CO. DIAMOND GRADE WHITE OR APPROVED EQUAL.  
LEGEND SHALL BE 3M CO. DIAMOND GRADE GREEN CUT OUT LETTERS AND NUMERALS, OR APPROVED EQUAL.



APPROVED BY:				
<i>John P. Sullivan</i>		24079 8/08/06		
JOHN P. SULLIVAN CITY ENGINEER		RCE	DATE	
RECOMMENDED:				
<i>Thomas J. Davis</i>		2013 8/07/06		
TRAFFIC/TRANSPORTATION MANAGER		TE	DATE	
REV	DESCRIPTION	BY	APP'D	DATE

CITY OF ONTARIO

STREET NAME SIGN

STANDARD  
DRAWING  
NUMBER

**5001**