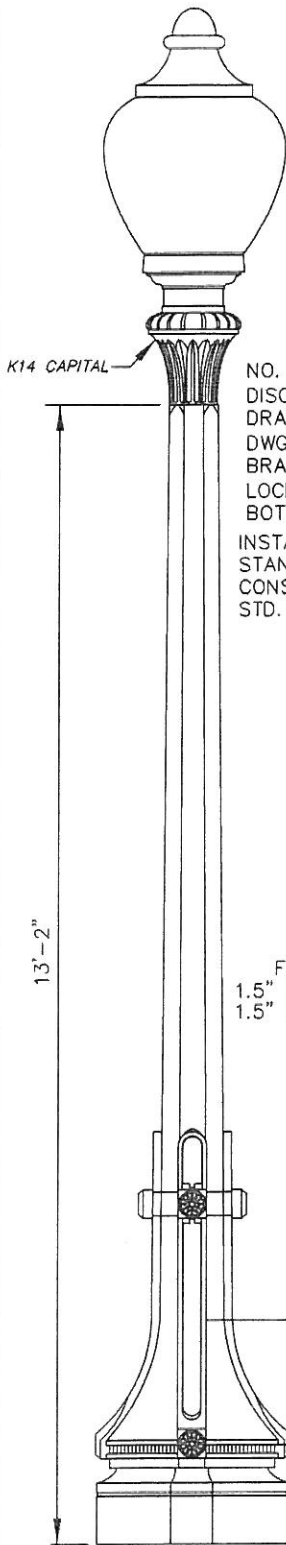


USE 60 WATT, LED KING LUMINAIRE  
# K118R-BAAR-III-60(SSL)-5000-240-K14-PR-BK

USE 100 WATT, LED KING LUMINAIRE  
# K118R-BAAR-III-100(SSL)-8000-240-K14-PR-BK

FRENCH INTERMEDIATE CAST ALUMINUM POLE  
CATALOGUE # KM62-13, PAINT: BLACK  
THE POLE SHALL BE CAST ALUMINUM - A356.  
THE POLE SHALL BE 13'-2" HEIGHT WITH A 21.75" DIAMETER BASE. A TENON SHALL BE PROVIDED AT TOP OF SHAFT, 3.5" O.D. x 3.5" L.



K14 CAPITAL

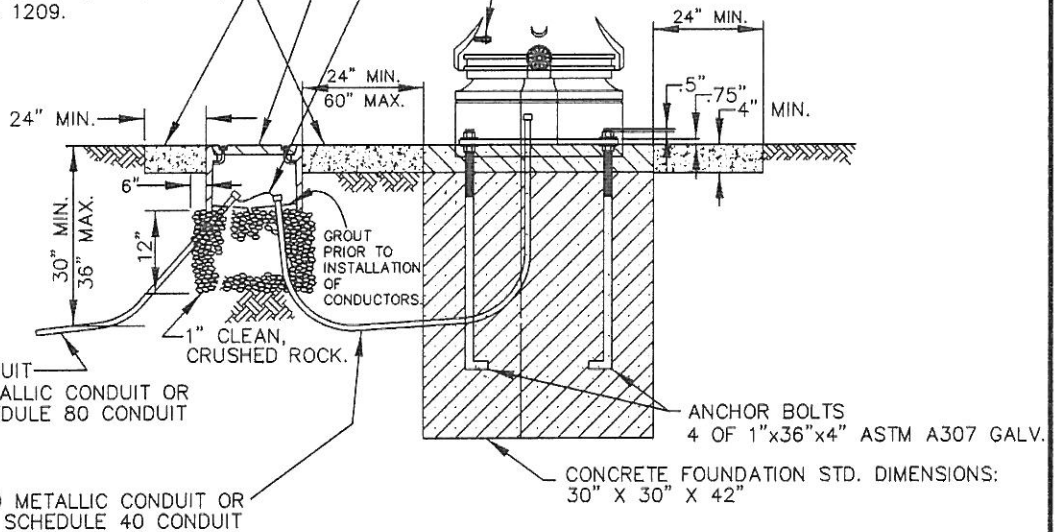
NO. 3 1/2 PULL BOX WITH FUSED DISCONNECT (SEE DETAIL ON CITY STANDARD DRAWING STREET LIGHT INSTALLATION STD. DWG. NO. 5102 DETAIL). INSTALL TWO 3/8" BRASS, NYLON OR STAINLESS STEEL LID LOCKS AND 2" MINIMUM OF GROUT IN BOTTOM OF BOX.

INSTALL PCC SLAB PER CITY STANDARD DRAWING SIDEWALK CONSTRUCTION ADJACENT TO CURB, STD. DWG. NO. 1209.

#6 AWG BOND WIRE (USE WITH METALLIC CONDUIT)

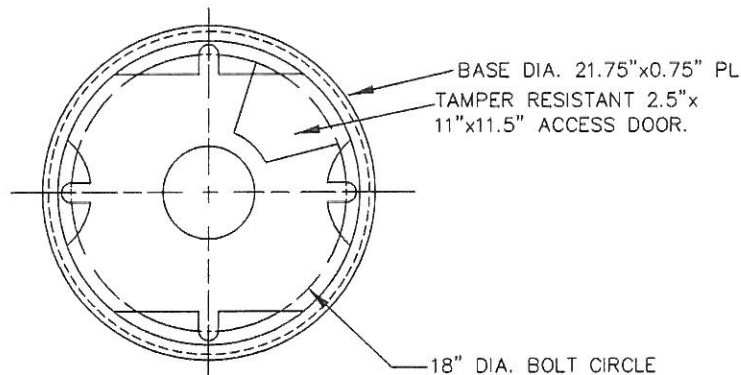
AFTER PLUMBING STANDARD, PLACE MORTAR ALL AROUND ANCHOR BOLTS

A 0.5" 13UNC GROUND STUD.

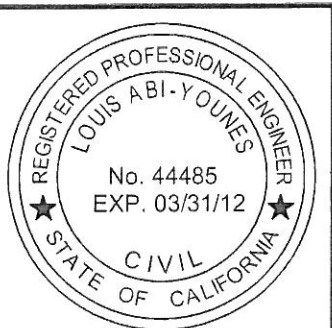


P.C.C. 560-C-3250, PER SECTION 201 OF THE STANDARD SPECIFICATIONS FOR PUBLIC WORKS CONSTRUCTION.

### KING STANDARD FOUNDATION AND PULLBOX INSTALLATION



### KING STANDARD BOLT CIRCLE DETAIL



APPROVED BY:				
<i>Louis Abi-Younes</i> 44485 9/9/10				
LOUIS ABI-YOUNES CITY ENGINEER RCE DATE				
RECOMMENDED:				
<i>Thomas A. Danna</i> 2013 9/9/10				
TOM DANNA, TRAFFIC/TRANSPORTATION MANAGER TE DATE				
REV	DESCRIPTION	BY	APP'D	DATE

CITY OF ONTARIO

KING STREET LIGHT  
STANDARD

STANDARD  
DRAWING  
NUMBER

5103