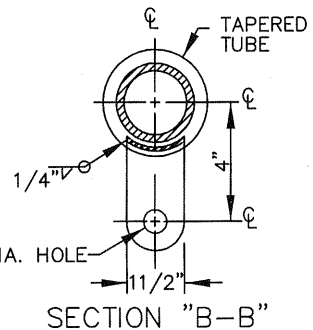
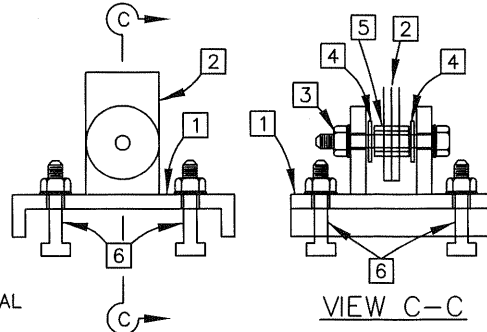


#### NOTES FOR MOUNTING ASSEMBLY

- 1 Lower mounting assembly, with gasket.
- 2 Upper mounting assembly (TAB).
- 3 Bolt, 1/2 inch, stainless steel, with self-locking nut.
- 4 Flat washer, stainless steel.
- 5 Bushing, bronze.
- 6 Mounting bolt, 1/4 inch minimum, with nut and lockwasher, or self-locking nut and cotter key.



#### NOTES:

1. MATERIAL: STEEL OF 48,000 PSI MIN. YIELD AFTER FABRICATION.
2. HOT DIP GALVANIZED FINISH. PER ASTM A-123.
3. ALL WELDS SHALL CONFORM TO AWS D1.1 SPECIFICATIONS.
3. BASE PLATES AND FLANGES SHALL BE PER ASTM A-35 & A-36 STEEL

#### HORIZONTAL MAST ARM

INSTALL IISNS ON HORIZONTAL MAST ARM 8 FEET ABOVE TOP OF SMA SIMPLEX TO CENTER OF IISNS ARM SIMPLEX. SEE DETAIL "A" AND SPECIAL PROVISIONS. THE MANUFACTURER SHALL PROVIDE CERTIFICATION TO THE CITY THAT THE POLE IS DESIGNED TO ACCOMMODATE THE ADDITIONAL MAST ARM, MOUNTINGS AND INTERNALLY ILLUMINATED STREET NAME SIGN.

#### NOTES FOR HORIZONTAL MAST ARM

1. ROUND TAPERED STEEL TUBE 0.1793" WITH MAXIMUM TAPER OF 0.14 INCHES PER FOOT AND 5 1/2" OD MAXIMUM AT POLE, ASTM A-36 & 53.
2. IN LIEU OF THE TORQUE REQUIREMENTS FOR HS BOLTS, CAP SCREWS SHALL BE TIGHTENED BY THE TURN-OF-NUT METHOD, 1/3 TURN FROM SNUG TIGHT CONDITION. NO WASHER WILL BE REQUIRED.
3. CALTRANS STANDARD DRAWING ES-6S, DETAIL 'F', FATIGUE RESISTANT WELD, IS REQUIRED AT IISNS ARM PLATE AND POLE BASE PLATE.

#### SPECIFICATIONS

DESIGN : AASHTO SPECIFICATIONS FOR THE DESIGN AND CONSTRUCTION OF STRUCTURAL SUPPORTS FOR HIGHWAY SIGNS, LUMINAIRES AND TRAFFIC SIGNALS, DATED 2004 (4TH EDITION).

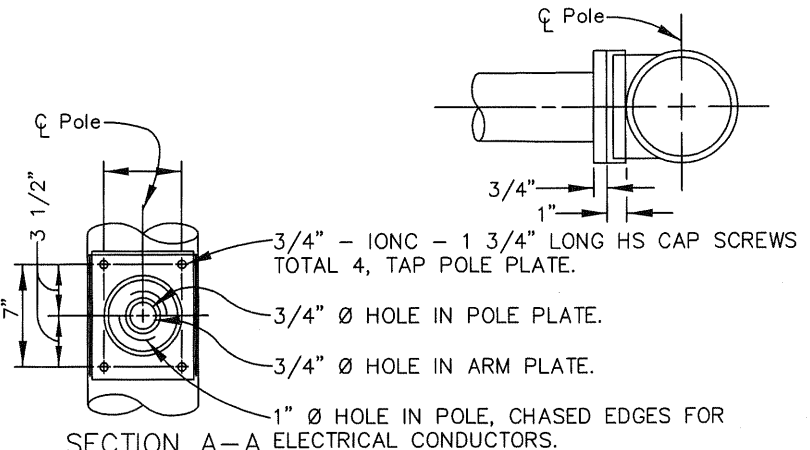
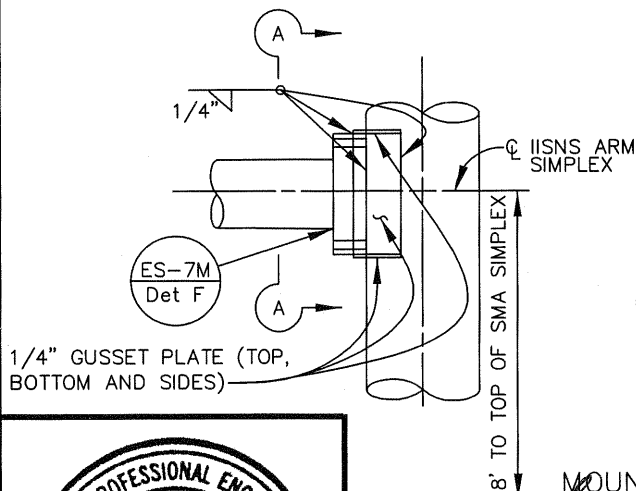
#### LOADING

WIND LOADINGS : 129 km/h AASHTO

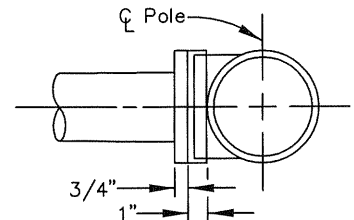
#### UNIT STRESSES

STRUCTURAL STEEL :  $f_y = 331 \text{ MPa}$  (TAPERED SHEET STEEL)  
 $f_y = 248 \text{ MPa}$  UNLESS NOTED OTHERWISE

CONSTRUCTION : STANDARD SPECIFICATIONS AND THE SPECIAL PROVISIONS.



#### SECTION A-A MOUNTING PLATE DETAIL



APPROVED BY: <i>John P. Sullivan</i>				
JOHN P. SULLIVAN CITY ENGINEER 24079 8/08/06 RCE DATE				
RECOMMENDED: <i>Thomas P. Adams</i>				
TRAFFIC/TRANSPORTATION MANAGER 2013 8/07/06 TE DATE				
REV	DESCRIPTION	BY	APP'D	DATE

CITY OF ONTARIO

IISNS MOUNTING PLATE  
DETAIL

STANDARD  
DRAWING  
NUMBER

5201