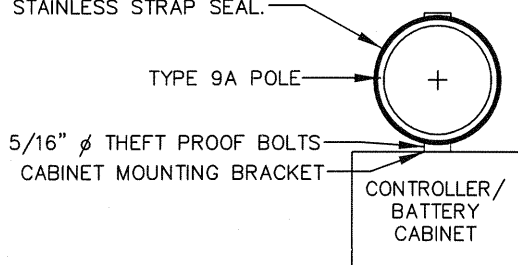
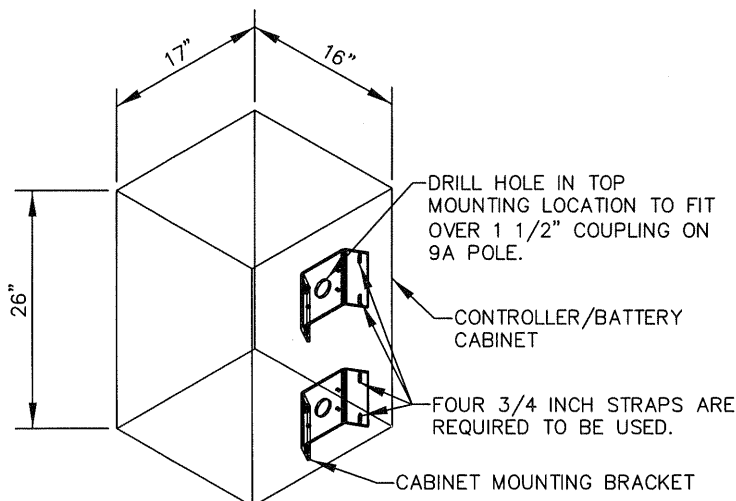


2 REVOLUTIONS OF ROUND EDGE STAINLESS
STEEL STRAP 3/4 INCH X 0.02 INCH MINIMUM
WITH 3/4 INCH STAINLESS STRAP SEAL.



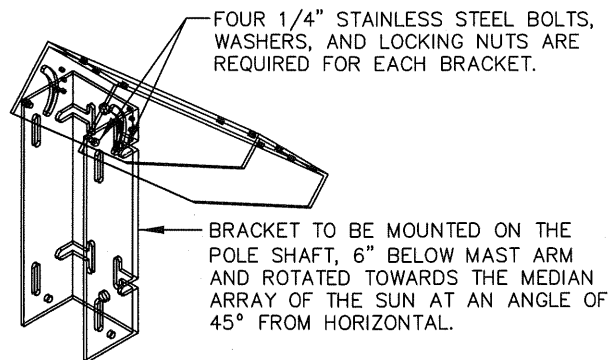
INSTALLATION OF FLASHING BEACON CONTROLLER CABINET ON TYPE 9A STANDARD

NOT TO SCALE



CABINET MOUNTING BRACKET INSTALLATION

NOT TO SCALE

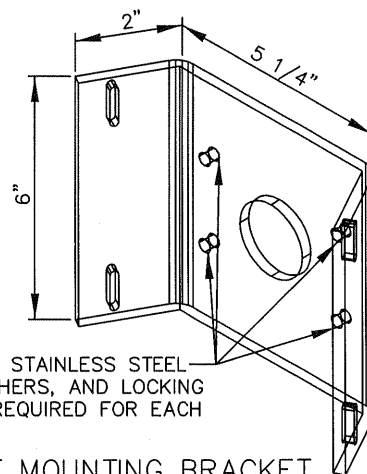


SOLAR PANEL MOUNTING BRACKET

HUTTON COMMUNICATIONS, INC.

PART # SPM1-SM/SP18

NOT TO SCALE



CABINET MOUNTING BRACKET

PELCO CABINET MTG

BRACKET # SE-0126 MODIFIED

NOT TO SCALE

Equipment Required - See Special Provisions for Equipment Specifications.

- 2 - MAT mounted 12" yellow LED 12V, DC with standard visor and 5" back plate per standard visor and 5" back plate per Caltrans Specifications 86-4.01B
- 1 - S1-1 or W11-2, and W16-9P Signs per Caltrans Standard Plan ES-7K and per Manual on Uniform Traffic Control Devices.
- 1 - 55 watt Solar Panel, Siemens Solar, Module SM55 Per Special Provisions.
- 1 - Mounting bracket for Solar Panel use Hutton Communications, Inc. Part # SPM1-SM/SP18 with two 3/4" straps with two bolts tapped into pole to prevent rotation.
- 1 - Controller / Battery Cabinet shall have a single front door with a lock operable by a corbin #2 key. When facing the cabinet door hinges shall be on the right. When the door is closed and latched, the door shall be locked.
- 2 - Cabinet Mounting brackets, PELCO # SE-0126 Modified, ASTM B 209M with two 3/4" stainless steel straps per detail here on.
- 1 - Caltrans Type 9A Flashing Beacon Main Pole per Caltrans Standard Plan ES-7K.
- 1 - Caltrans Type 9A Flashing Beacon Arm per Caltrans Standard Plan ES-7K.
- 4 - Anchor bolts 1 1/4" O x 44" x 4" per Caltrans Standard Plan ES-7L.
- 1 - 5/8" x 8' Blackburn Copper Clad, or equal Ground Rod with Ground Clamp and #8 AWG Bonding conductor per City Standard Drawing Street Light Installation Detail.
- 1 - 100 amp hour gel cell battery per Special Provisions.
- 1 - Wired "L" panel w/CPR2102-P Time Switch, DCF2 Flasher, Solsum 8.8 Solar, 8-pin Screw type terminal block per City Standard Drawing Flashing Beacon Cabinet Wiring Diagram.
- 1 - Pager programmable Controller RTC Model#CPR2102-P Time Switch.
- 1 - Two circuit 12VDC flasher RTC Model#DCF2.
- 1 - Antenna for Pager Programmable Controller per City Standard Drawing Flashing Beacon.

* FOR POLE INSTALLATION DETAILS REFER TO STANDARD DRAWING FLASHING BEACON.



APPROVED BY:				
<i>John P. Sullivan</i>				
24079 8/08/06				
JOHN P. SULLIVAN CITY ENGINEER RCE DATE				
RECOMMENDED:				
<i>Shawn A. Dan</i>				
2013 8/07/06				
TRAFFIC/TRANSPORTATION MANAGER TE DATE				
REV	DESCRIPTION	BY	APP'D	DATE

CITY OF ONTARIO

FLASHING BEACON -
MOUNTING DETAILS

STANDARD
DRAWING
NUMBER

5205