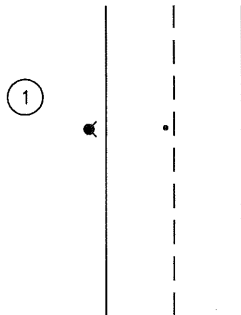


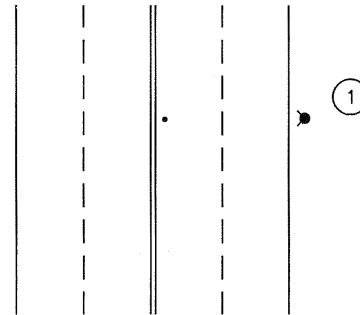
TWO LANE STREET



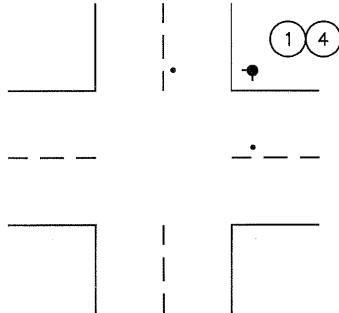
LEGEND:

- FIRE HYDRANT
- PAVEMENT MARKER

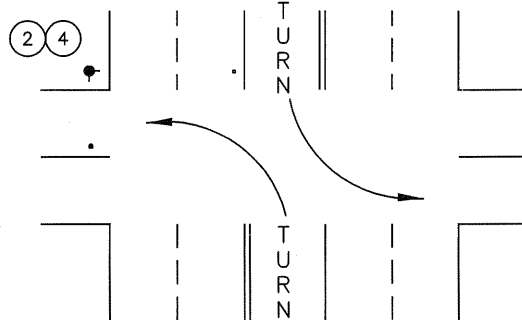
MULTI-LANE STREET



TWO LANE STREET AT INTERSECTION



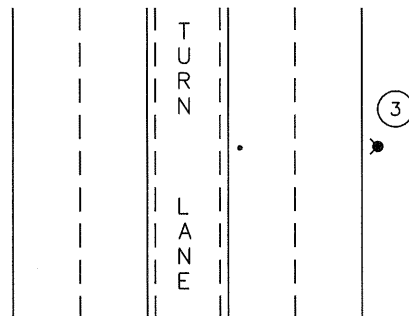
FOUR LANE STREET AT INTERSECTION



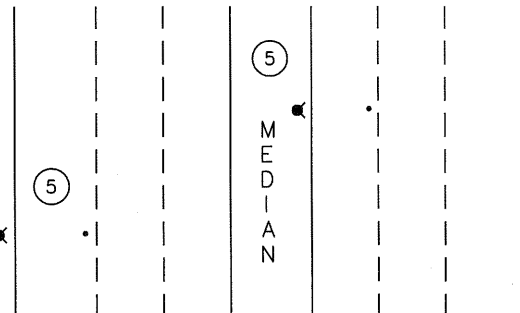
NOTES:

- ① MARKERS SHALL BE PLACED 6" FROM THE EDGE OF THE PAINTED \mathcal{C} , OR IF NO PAINTED \mathcal{C} EXISTS, 6" FROM THE CENTER OF THE ROADWAY ON THE SIDE NEAREST THE HYDRANT.
- ② MARKERS SHALL BE PLACED 6" FROM THE EDGE OF THE PAINTED WHITE CHANNELIZING LINE ON THE SIDE NEAREST THE HYDRANT.
- ③ MARKERS SHALL BE PLACED 6" FROM THE EDGE OF THE PAINTED YELLOW BARRIER LINE ON THE SIDE NEAREST THE HYDRANT.
- ④ HYDRANTS WITHIN A CURB RETURN SHALL HAVE MARKERS PLACED IN THE APPROPRIATE LOCATIONS ON BOTH STREETS.
- ⑤ MARKERS SHALL BE PLACED 6" FROM THE EDGE OF THE PAINTED LANE LINE CLOSEST TO AND ON THE SIDE NEAREST THE HYDRANT.
- ⑥ ADHESIVE AND APPLICATION METHOD SHALL BE APPROVED BY THE CITY ENGINEER OR HIS REPRESENTATIVE.
- ⑦ MARKERS SHALL BE BLUE REFLECTIVE PAVEMENT MARKERS OF A TYPE APPROVED BY THE CITY ENGINEER OR HIS REPRESENTATIVE.

MULTI-LANE STREET WITH: -TURN LANE-



-RAISED MEDIAN-



APPROVED BY:				
<i>John P. Sullivan</i> 24079 4/1/5				
JOHN P. SULLIVAN CITY ENGINEER RCE DATE				
RECOMMENDED:				
<i>Scott Butler</i> 57875 3/14/5				
ASST. UTIL. DIRECTOR/ENG. RCE DATE				
REV	DESCRIPTION	BY	APP'D	DATE

CITY OF ONTARIO

PAVEMENT MARKERS
AT
FIRE HYDRANT

STANDARD
DRAWING
NUMBER

4302