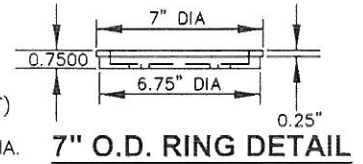
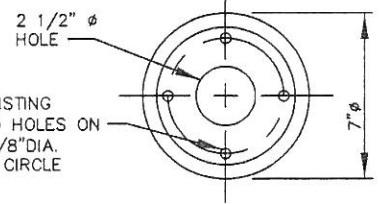


- ✱ USE 60 WATT, LED KING LUMINAIRE
K118R-BAAR-III-60(SSL)-5000-240-K14-PR-BK
- ✱ USE 100 WATT, LED KING LUMINAIRE
K118R-BAAR-III-100(SSL)-8000-240-K14-PR-BK



K14 CAST ALUMINIUM CAPITAL WITH CAST ALUMINUM ROTO-LOCK GLOBE RING ASSEMBLY
PAINT: BLACK

(4) 3/8"x1 1/4" L ST.STL. SET SCREWS AT 90° APART

SKIRT COVER (SEMI-GLOSS BLACK)

NO. 3 1/2 PULL BOX WITH FUSED DISCONNECT (SEE DETAIL ON CITY STANDARD DRAWING STREET LIGHT INSTALLATION DETAIL).
STD. DWG. NO. 5102
INSTALL TWO 3/8" BRASS, NYLON OR STAINLESS STEEL LID LOCKS AND 2" MINIMUM OF GROUT IN BOTTOM OF BOX.

INSTALL PCC SLAB PER CITY STANDARD DRAWING SIDEWALK CONSTRUCTION ADJACENT TO CURB, STD. DWG. NO. 1209.

#6 AWG BOND WIRE (USE WITH METALLIC CONDUIT)

8" DIA.

HANDHOLE OPENING
7"x8-1/8" @ 0°
W/CONCRETE COVER

ACCESS HOLE 7"
DIA. x 11-3/4"
DIA x 16" LG.

24" MIN. 60" MAX.

24" MIN. 30" MIN. 36" MAX.

GROUT PRIOR TO INSTALLATION OF CONDUCTORS

1" CLEAN, CRUSHED ROCK.

FEED CONDUIT
1 1/2" RIGID METALLIC CONDUIT OR
1 1/2" PVC SCHEDULE 80 CONDUIT

1" RIGID METALLIC CONDUIT OR
1" PVC SCHEDULE 40 CONDUIT

AFTER PLUMBING STANDARD, PLACE MORTAR ALL AROUND ANCHOR BOLTS

4 OF 3/4"x36"x4" ANCHOR BOLTS ASTM A-307, GALV.

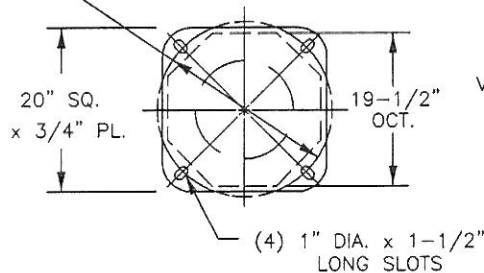
CONCRETE FOUNDATION STD. DIMENSIONS:
30" X 30" X 42"

P.C.C. 560-C-3250, PER SECTION 201 OF THE STANDARD SPECIFICATIONS FOR PUBLIC WORKS CONSTRUCTION.

FOUNDATION AND PULLBOX INSTALLATION

AMERON CORSICAN CONCRETE POLE
TRADITIONAL SERIES
CATALOG #20CT15 WITH TENON
BLACK, EXPOSED AGGREGATE FINISH (123I),
WITH AMERSHIELD ANTI-GRAFFITI COATING.

21-1/2" TO 22-1/2" DIA. B.C.



STEEL GALV. 3-1/2" OD TENON

3-1/2" OD DIA.

3-1/2" LG.

VIEW "A"

SKIRT COVER (ALUMINUM ALLOY 319, SEMI-GLOSS BLACK)

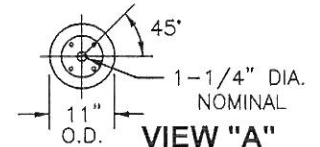
(4) 1/2"-13UNC x1-3/4" LG STL COUPLINGS @ 90° APART WITH

(4) 1/2"-13NC GALV STEEL

x 12" LG. ANCHORS ON A

4-1/2" DIA. BOLT CIRCLE (MOD41 POLE TOP CONFIG)

TOP DETAIL



BOLT CIRCLE DETAIL

CITY OF ONTARIO

CORSICAN STREET
LIGHT STANDARD

STANDARD
DRAWING
NUMBER

5107

APPROVED BY:				
LOUIS ABI-YOUNES, CIVIL ENGINEER		44485	9.9.10	DATE
RECOMMENDED:				
TOM DANN, TRAFFIC/TRANSPORTATION MANAGER		2013	9/9/10	DATE
REV	DESCRIPTION	BY	APP'D	DATE

