

NOTES

- ① ALL METAL TO RECEIVE ONE COAT OF ZINC CHROMATE PRIMER AND TWO COATS OF MEDIUM ALKYD PAINT.
- ② DECORATIVE EXTERIOR FINISH TO BE COMPATIBLE WITH BUILDING
- ③ 5" THICK CONCRETE SLAB W/6"X6"-10X10 W.W.M. OR EQUIVALENT
- ④ 8" BLOCK WALL WITH 1800 PSI MORTAR, 2000 PSI, GROUT & ASTM A615, GRADE 40 OR 60 REBAR ON 2000 PSI CONCRETE FOOTING.



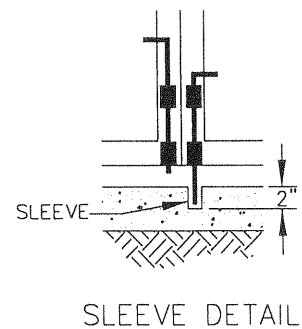
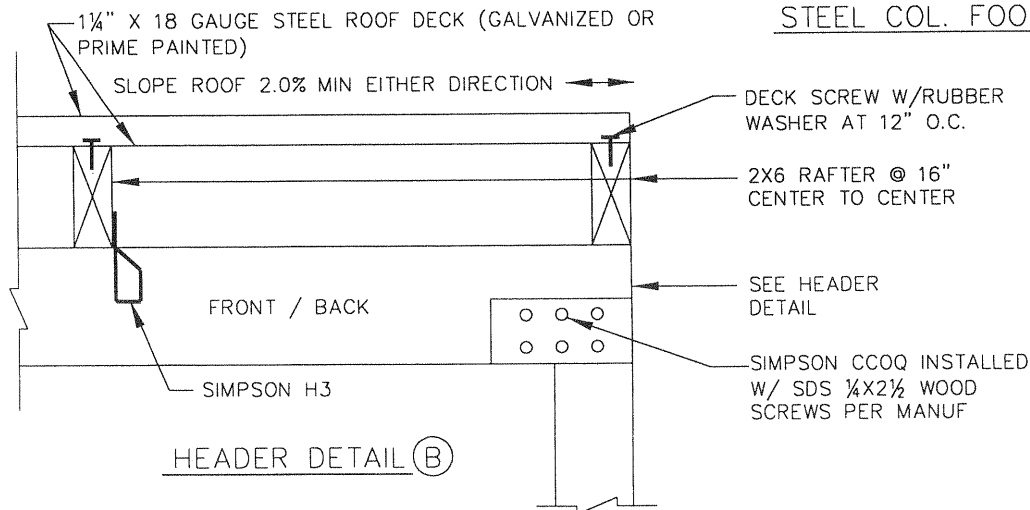
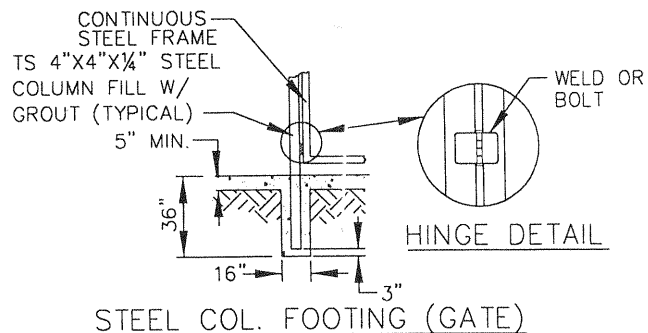
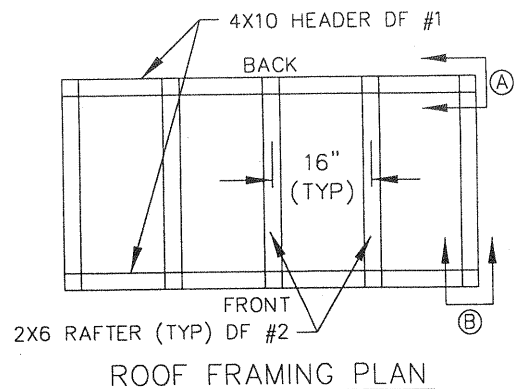
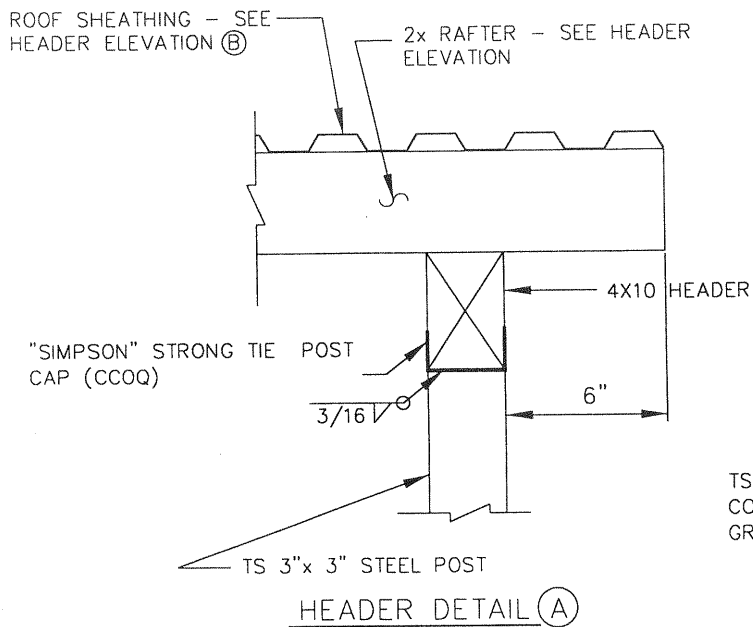
APPROVED BY:		11.1.06	
PLANNING DEPARTMENT		DATE	
BUILDING DEPARTMENT		10/26/06	
DATE			
APPROVED BY:		24079 10/30/06	
JOHN P. SULLIVAN CITY ENGINEER		RCE DATE	
RECOMMENDED:		44485 10/30/06	
ASSISTANT CITY ENGINEER		RCE DATE	
REV	DESCRIPTION	BY	APP'D DATE

CITY OF ONTARIO

COMMERCIAL REFUSE
ENCLOSURE FOOD
SERVICE (<1,000 SF
BLDG) (ONE 4 CU. YD BIN)

STANDARD
DRAWING
NUMBER

6307



APPROVED BY:		11-01-06	
PLANNING DEPARTMENT		DATE	
BUILDING DEPARTMENT		DATE	
APPROVED BY:		10-26-06	
JOHN P. SULLIVAN CITY ENGINEER		RCE DATE	
RECOMMENDED:		10-30-06	
ASSISTANT CITY ENGINEER		RCE DATE	
REV	DESCRIPTION	BY	APP'D DATE

CITY OF ONTARIO	
COMMERCIAL REFUSE ENCLOSURE FOOD SERVICE (<1,000 SF BLDG) (1-4 CU. YD BIN EACH)	STANDARD DRAWING NUMBER 6308